



# Distance. Dedication. Difference. And the Digital Drift:

**When AI Pulls Us Away From Reality**



# A familiar moment in remote health...

2am

Long road

One clinician

One patient waiting

Distance that no software update  
can fix

# Distance. Dedication. Difference.

A long, straight road stretches into the distance, flanked by green fields and utility poles under a clear sky. The road is paved and leads the eye towards the horizon. The fields on either side are lush and green, with some taller grasses in the foreground. The utility poles are evenly spaced along the left side of the road, creating a strong sense of perspective. The sky is a pale, clear blue, and the overall atmosphere is one of quiet determination and forward motion.

- Distance shapes decisions
- Dedication sustains us
- Difference is what we strive for
- Where does AI fit?

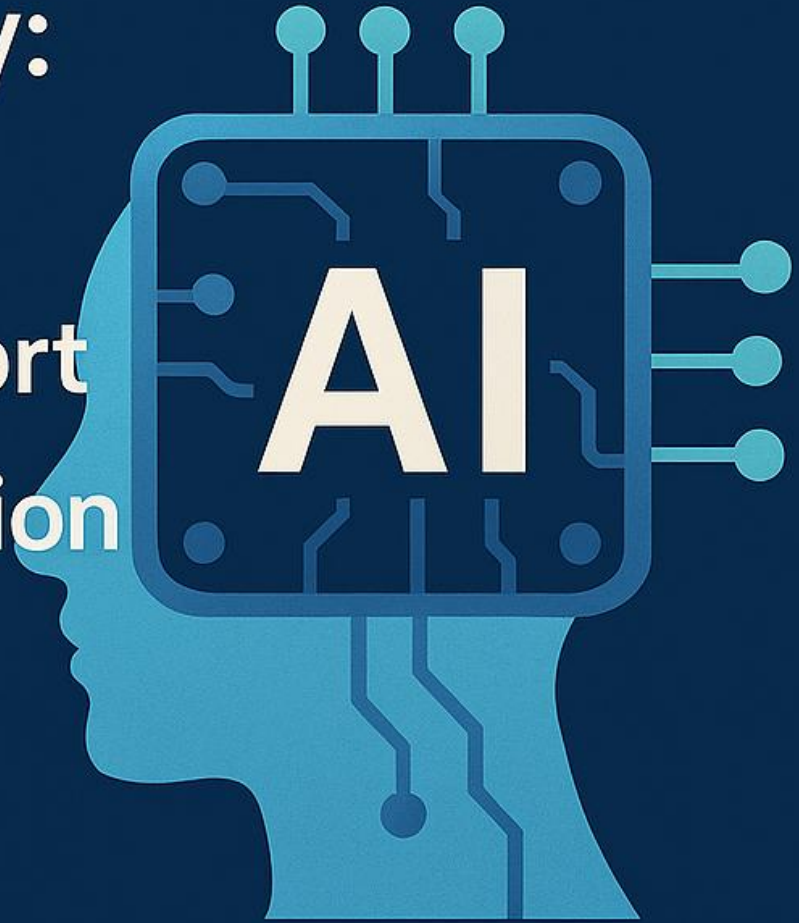
# THE PROMISE OF AI

---

AI in healthcare today:

- Predictive analytics
- Documentation support
- Telehealth augmentation
- Workforce relief

But...



# The Tension

**AI reduces  
friction.**

**Remote  
health  
relies on it.**

**Friction =**

**Context  
Culture  
Connection  
Clinical judgement**

# AI Removes Us From Reality

**Four ways  
AI can  
distance us:**

**Four ways  
AI can  
distance us:**

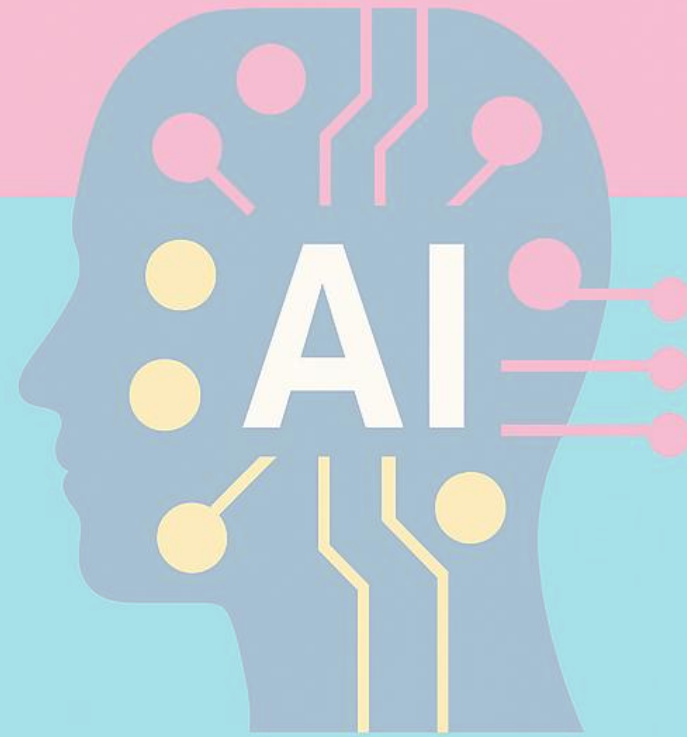
- 1. Illusion of proximity**
- 2. Deskilling drift**
- 3. Data mirage**
- 4. Ethical distance**

# THE ILLUSION OF PROXIMITY

AI simulates closeness.

But proximity  $\neq$  presence.

- Chatbots can check in
- They can't sit in silence
- They can't read the room
- They can't feel community grief



## 2. Deskilling Drift

---

### **Automation can erode:**

- Situational awareness
- Clinical judgement
- Tacit knowledge

*Especially in complex, remote environments.*



# 3. The Data Mirage

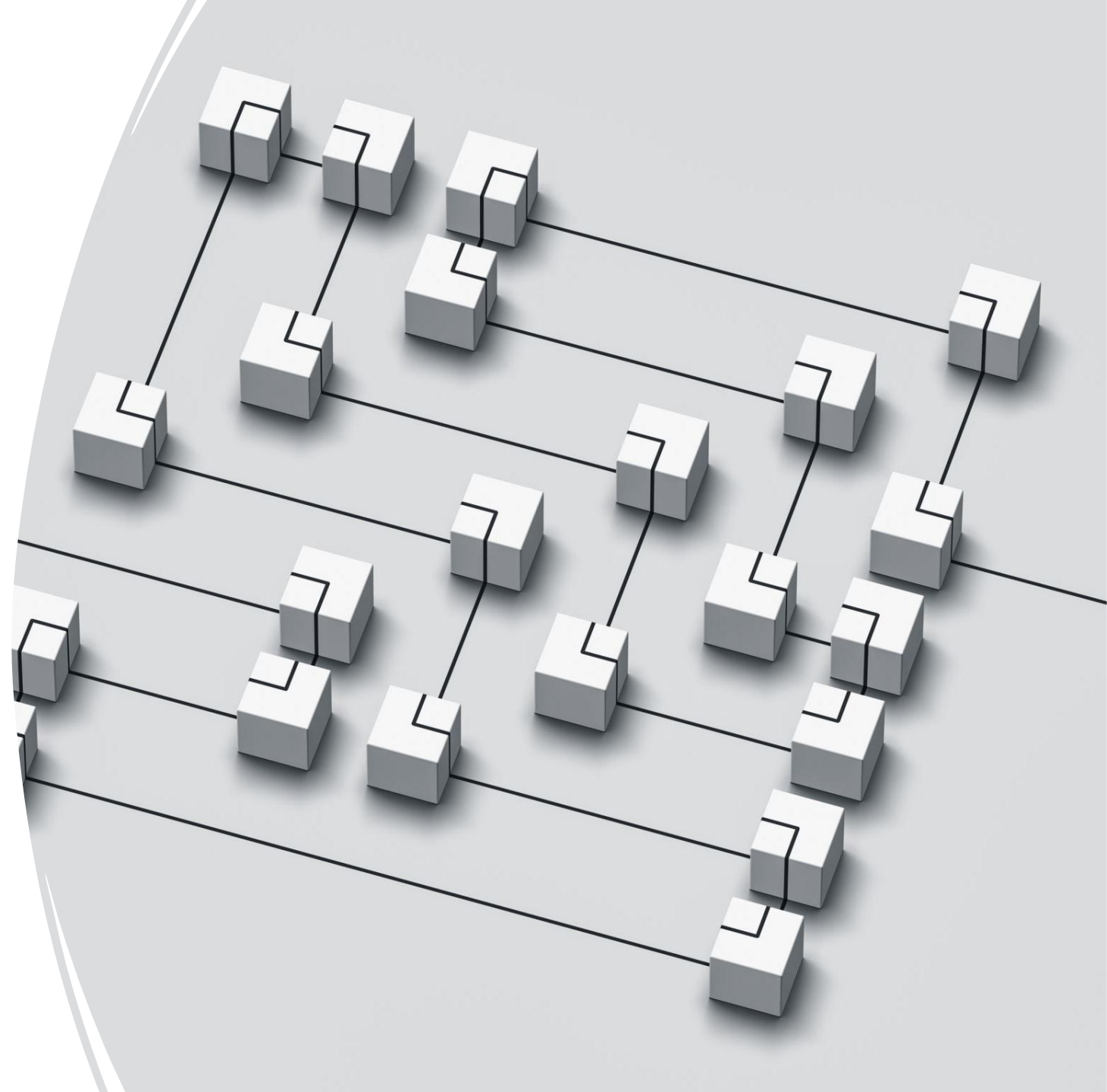
---

AI sees patterns, not people.

Remote health is:

- Cultural
- Relational
- Historical
- Community-driven

No dataset captures Country.



## 4. Ethical Distance

When decisions are automated:

- Accountability blurs
- Risk increases
- Responsibility becomes unclear

Remote settings can't afford ambiguity.



# Story of Contrast

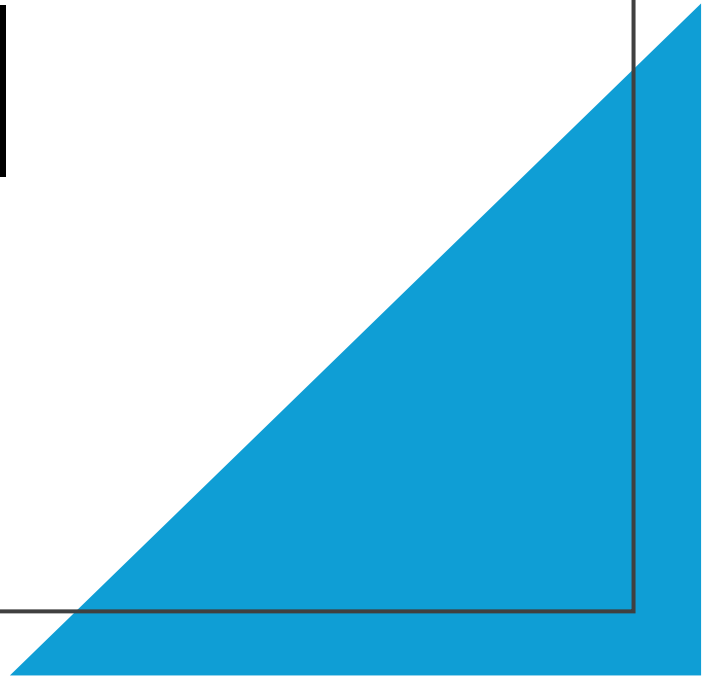


**A nurse stays overnight with a frightened patient.** No protocol. No algorithm. Just humanity.



*That night changed a life.*

# Another example of Reality vs AI







Josh Stafford

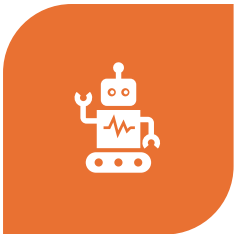
15 NOV 2023 🌿



Josh Stafford

15 NOV 2023 🐾

# Where AI *Can* Help – without pulling us away



USE AI TO SUPPORT  
— NOT REPLACE —  
REALITY.



REDUCE ADMIN



IMPROVE  
LOGISTICS



ENHANCE SAFETY



AMPLIFY HUMAN  
PRESENCE

# The Future

---

**AI will shape healthcare. We will shape remote health.**

The difference we make is:

- Human
- Present
- Grounded
- Real





**“The future of remote health isn’t  
artificial.  
It’s deeply, profoundly human.”**