

Innovating Clinical Education: Combining remote facilitation with Onsite Support in MM5 Regions

Ariane Aldus, Fiona Black, Karyn Hetherington, Dr Adam Johnson, Professor Martin Jones and Professor Beth Armstrong

Pemberton Pools Tourism Western Australia



Acknowledging traditional custodians

We acknowledge and pay our respect to Aboriginal and Torres Strait Islander People as the first inhabitants of the nation, and who are the traditional custodians of the lands where our staff and students live, learn and work. We acknowledge the strength and resilience of our First Nations people and endeavour to work together for the benefit of all.

Our team



Ari Aldus

Lecturer (Clinical Education)



Fiona Black

Discipline Advisor (Nursing)



Karyn Hetherington

Discipline Advisor (Nursing)

About this presentation

- **South West Context**
 - What is the UDRH SW
 - Project Enablers
 - Barriers
- **Current Remote Facilitation**
 - Stakeholder Feedback
- **Onsite Support Sessions**
- **Evaluation**
 - Feedback



The South West Context



University Department of Rural Health South West

UDRH SW commenced in 2023 in the South West of Western Australia

Located on the ECU South West Campus, UDRH SW has local health care professionals across the South West



Enablers

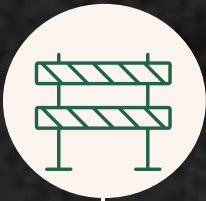
ECU School of Nursing and Midwifery located on South West campus since 1986

Long standing agreements between university and WACHS sites in the South West



ECU South West

The South West Context



Barriers

24000 square kilometres

South West is the most populous and fastest growing region of WA (outside of Perth and Peel)¹

70 to 74 year cohort had a 45.6% increase in the South West from 2016 to 2021²



The South West Context



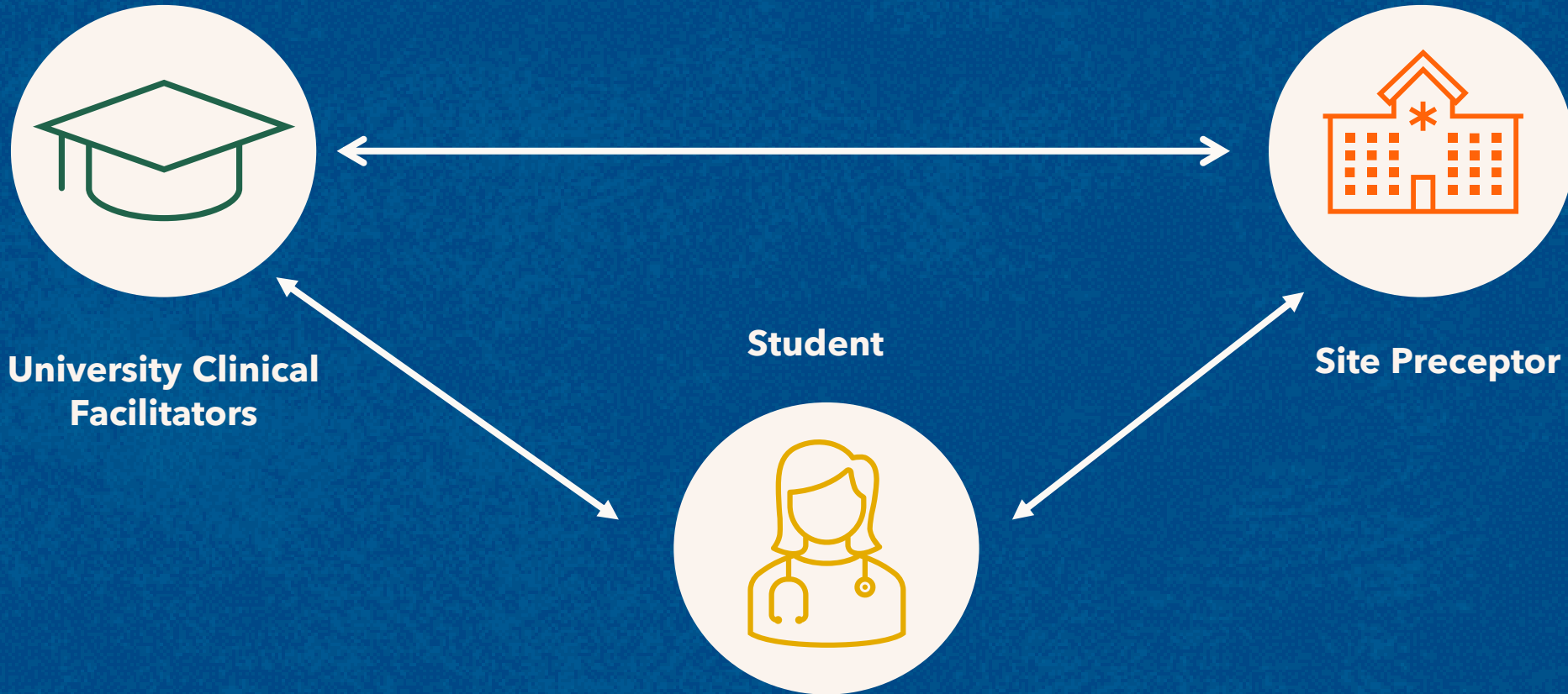
The South West Nursing Students

- 11 public hospitals³ and 1 private hospitals
- Reduced students in Lower South West Hospitals
- Lower outer South West 5 hospitals
 - 141 km between them
 - 3 hour round trip through hospitals
 - 6 hour round trip from ECU SW campus

Reliance on remote/tele clinical nursing facilitation to reduce time burden.



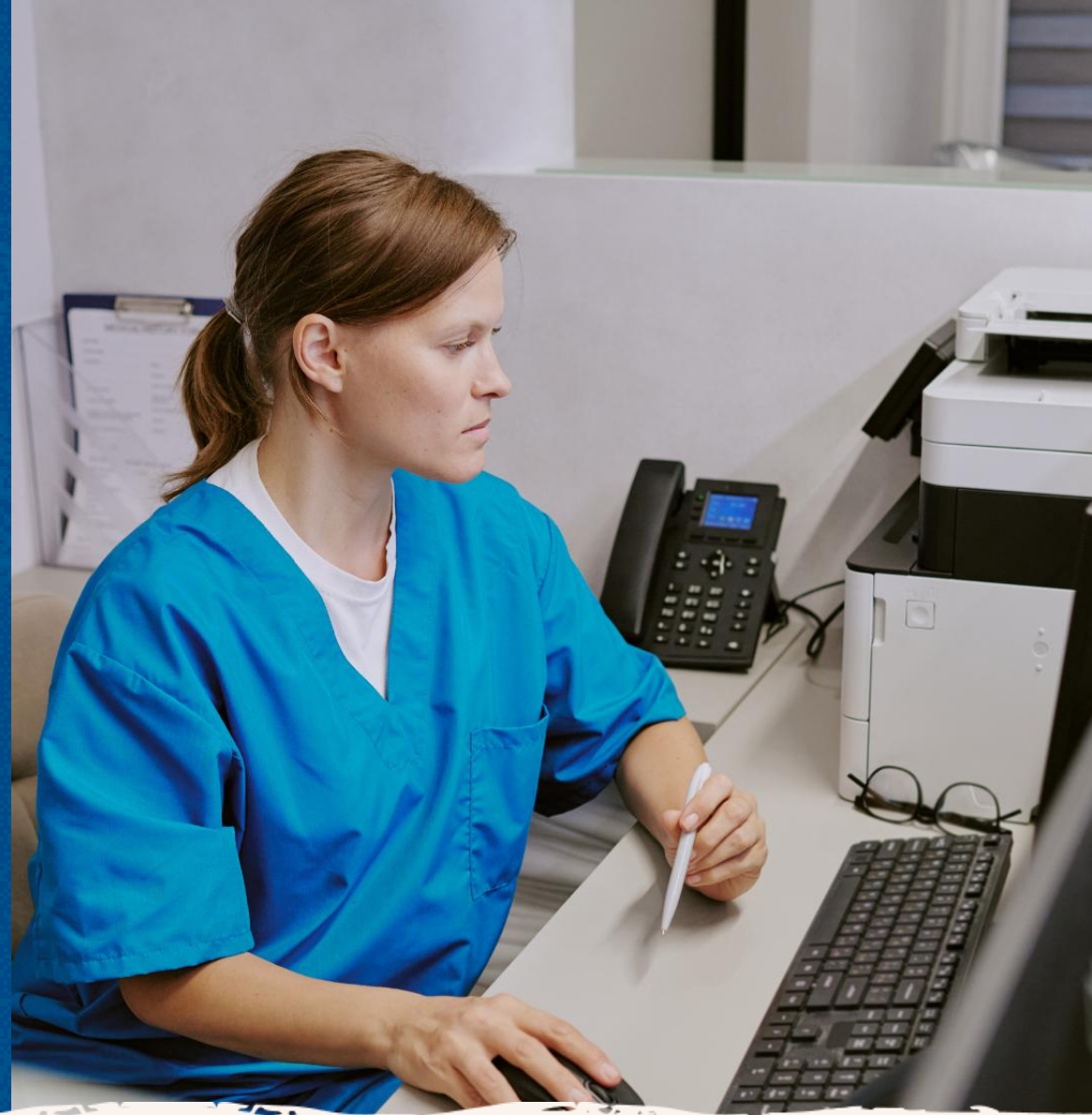
Current Remote Facilitation



Why change?

Low numbers of students experiencing clinical placements in MM5 regions of South West WA
ECU student self select for placement opportunities

Is remote clinical facilitation a barrier to students selecting a more rural placement? Would a face to face experience improve quality clinical placement



Stakeholder Feedback



University Clinical Facilitators

- Remote telefacilitation
- + Consistent supervision standards
 - + Standardised assessment across student cohort
 - Difficulty for skill development facilitation and assessment
 - Competence assessment challenges with remote only



Site Preceptors

- Onsite support
- + Enjoyed student experience
 - + Wanting more students
 - Unclear about student scope of practice
 - Limited visibility of Clinical Facilitators
 - Missed informal, face to face conversations
 - Felt underprepared for students



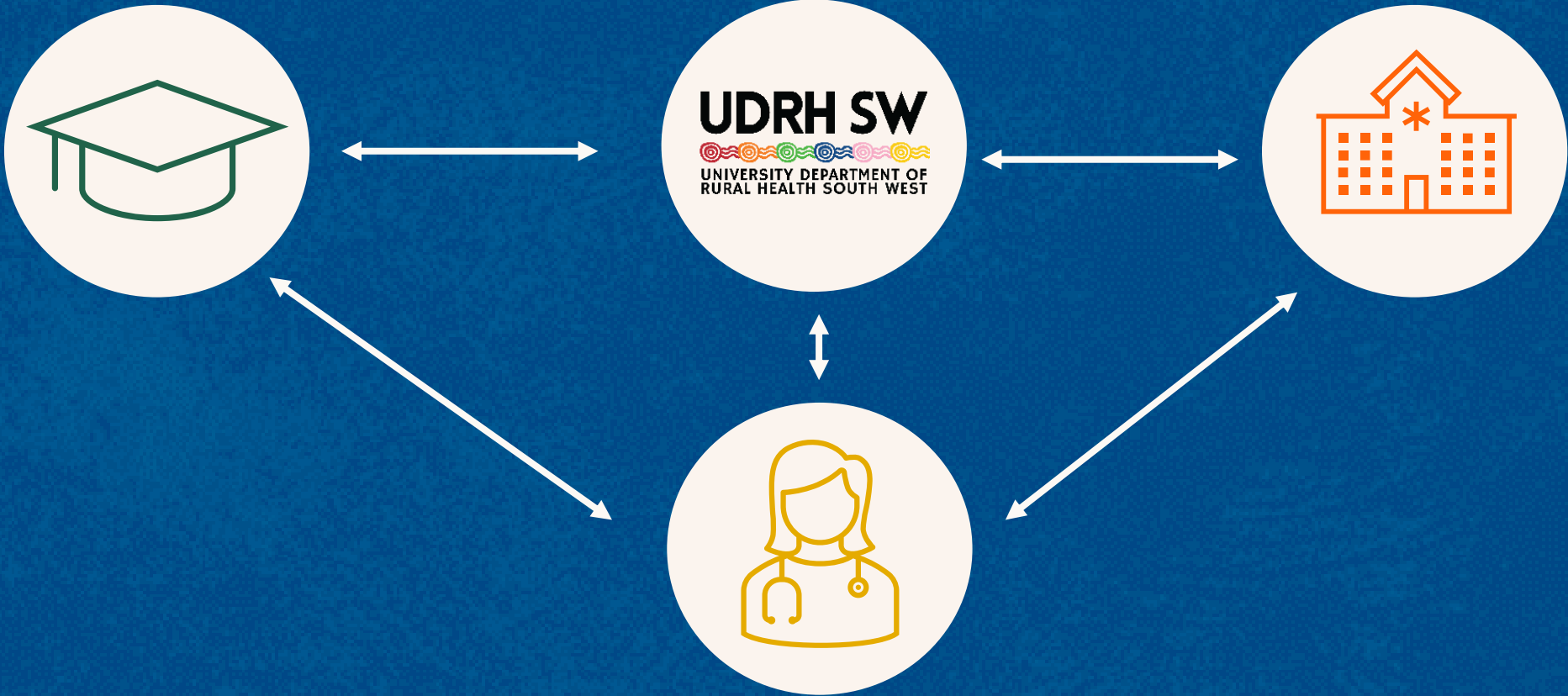
Students

- What they wanted
- Time to talk through issues in depth
 - Face to face skills and role play practice
 - Improved communication between sites and universities
 - Safe, non-assessed space to explore knowledge gaps

Rationale

- 1 Remote Clinical Facilitation has had limited research
- 2 Issues around communication appeared to be due to the lack of incidental, face to face communications.
- 3 Providing face to face clinical facilitation would be cost prohibitive due to the distances between health services in the outer South West

Solution: Onsite Support Session



Onsite Support Sessions

About the Sessions

- Provide face-to-face guidance and support
- Assist with hands-on skill development
- Strengthen communication between stakeholders
- Enhance student confidence and clinical readiness
- Provided by local nurses who are passionate about the local area and health service



Onsite Support Sessions

Communication is key

- 1 UDRH SW nurses to communicate with Preceptors/Staff Development Nurse, Clinical Facilitators and Students prior to commencement
- 2 Communication with Preceptor/Staff Development Nurse prior to sessions to ensure targeted support
- 3 Weekly communication with clinical facilitator



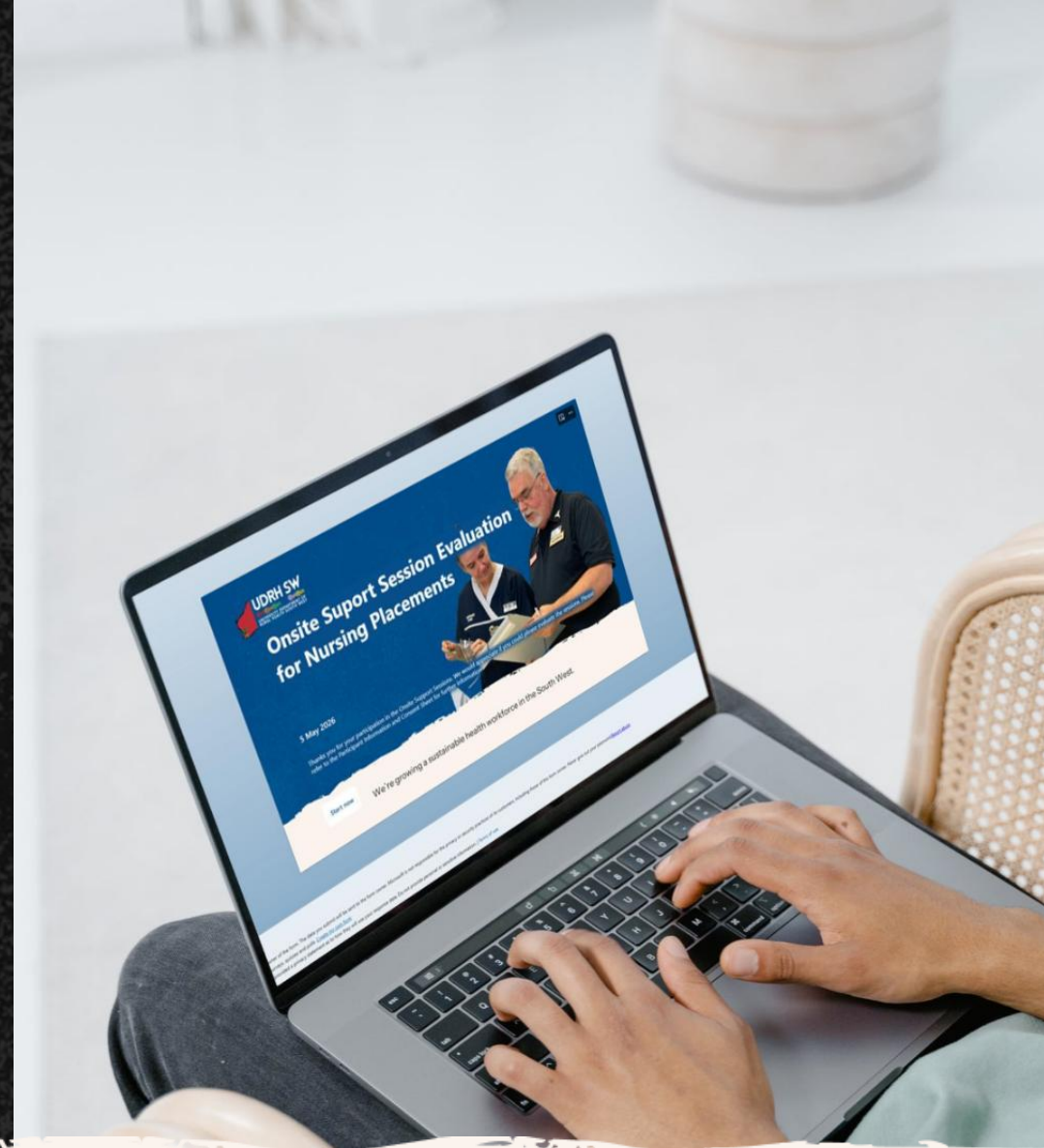
Evaluation

Would an additional 1 hour face to face Onsite support session delivered by local UDRH SW nursing staff provide a positive impact?

Do the Onsite Support Sessions...

1. Improve cohesive collaboration between stakeholders?
2. Increase skill development and clinical knowledge?
3. Enhance student access to learning opportunities?
4. Contribute positively to learning outcomes?
5. Improve overall student experience on placement?

Positive signs



Evaluation

Feedback



UDRH SW Nursing Student

"I have thoroughly enjoyed my first rural placement and having an onsite support advisor as my mentor gave me an even better experience! I felt support and any questions I had, or uncertainty was answered right away!! The best placement thus far!"

Evaluation

Challenges

1

Low number of students in the region so low number of responses

2

No formal responses from Clinical Facilitators

3

Unable to get Ethics through WACHS at this time to receive formal evaluation from Preceptors

What next?



Collaboration

Continue to collaborate with ECU to grow the program



Growth

Grow the program to include other universities



Community

Liaise with other areas of South West to evaluate need in these areas



Research

Continue to support research and growth



PD

Provide Preceptor training to healthcare agencies on request.

References.


1. <https://www.wa.gov.au/government/document-collections/south-west-regional-planning>
2. <https://app.remplan.com.au/south-west-region/community/population/age>
3. <https://www.wacountry.health.wa.gov.au/Our-services/South-West/South-West-local-health-directory>

Thank you.

Get In Touch.

 (08) 6304 3111

 UDRHSW@ecu.edu.au

 www.udrh.ecu.edu.au

More about onsite support

