

Keeping women on country and families together

Midwifery Obstetric Emergency Telehealth Service (MOETS)



Elissa Spackman
Clinical Midwife Consultant - Endorsed
MOETS Team Lead



Government of Western Australia
WA Country Health Service

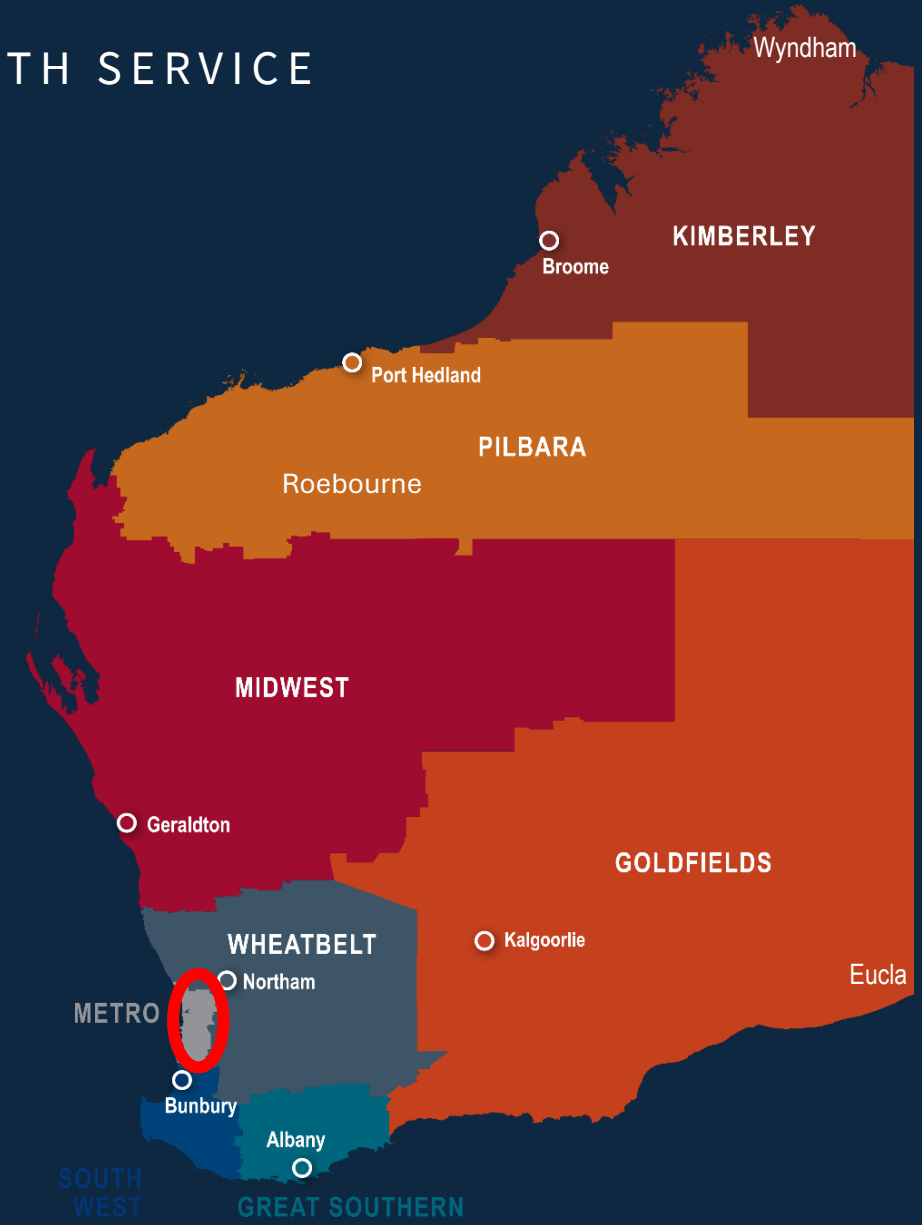
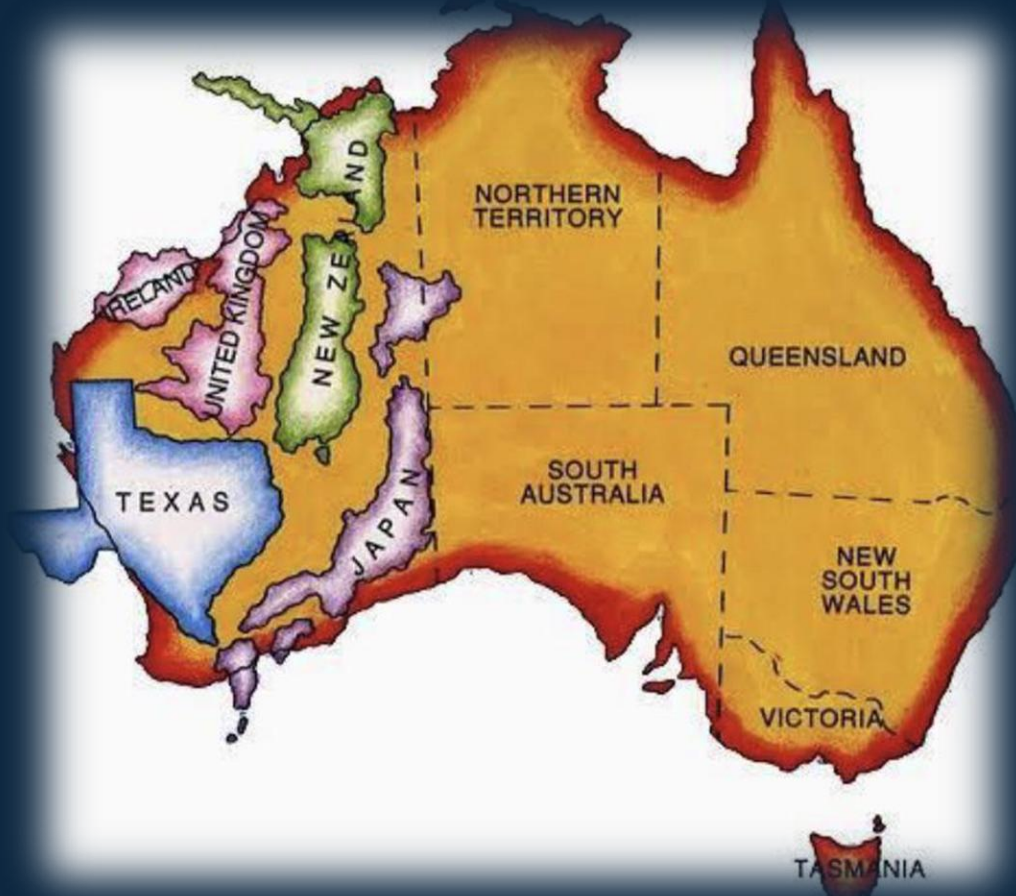
WA Country Health Service acknowledges the Aboriginal people of the many traditional lands and language groups of Western Australia. We acknowledge the wisdom of Aboriginal Elders both past and present and pay our respect to the Aboriginal communities of today.



Replanting the Birthing Trees, Valerie Ah Chee, 2022



ABOUT WA COUNTRY HEALTH SERVICE

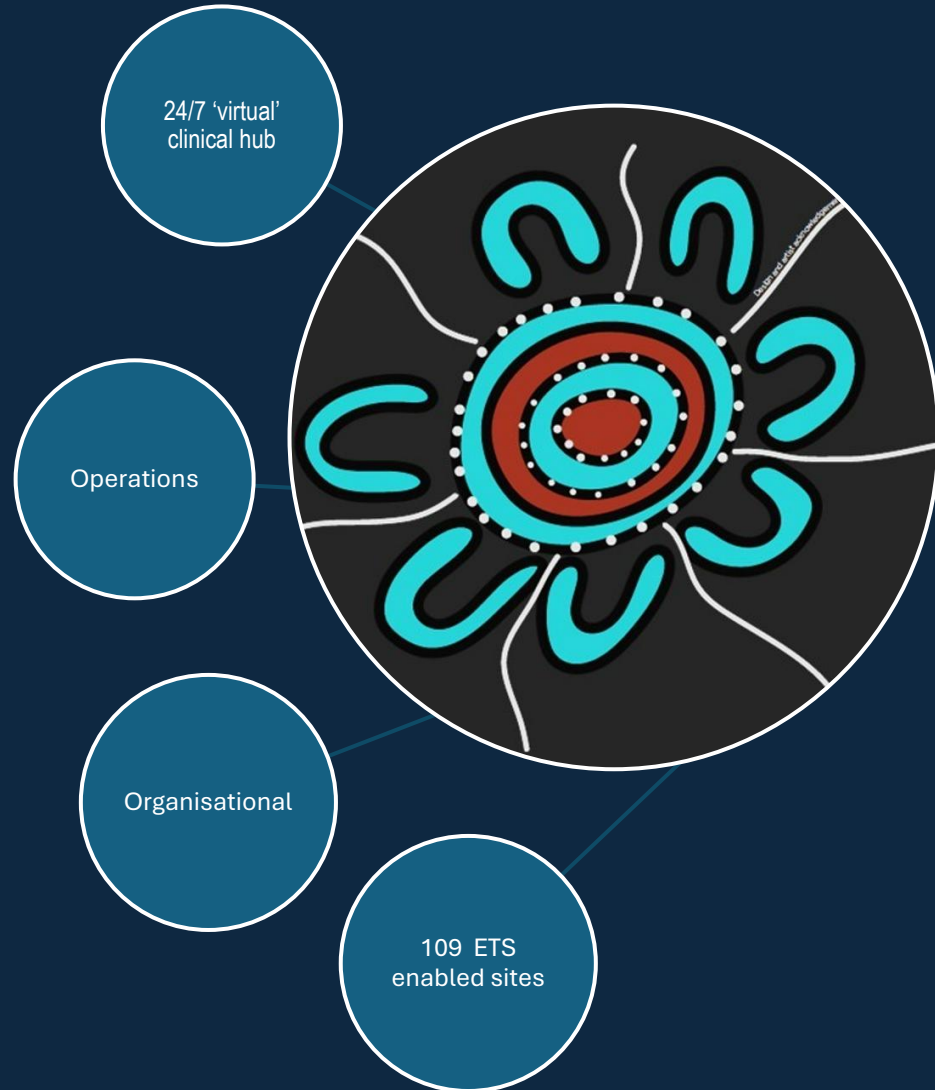


Our services span across more than **2.55 million square kilometres**, from Wyndham to Eucla.



WACHS Command Centre

Model of Service



- ✓ Emergency Telehealth Service (ETS)
- ✓ In-Patient Telehealth Service (ITS)
- ✓ Mental Health Emergency Telehealth Service (MHETS)
- ✓ Palliative Care Emergency Telehealth Service (PalCATS)
- ✓ BACK UP Nurse Support
- ✓ Acute Patient Transport Coordination (APTC)
- ✓ Midwifery and Obstetrics Emergency Telehealth Service (MOETS)



2024-25 Country WA Women

	TOTAL
Country births	6090
WACHS births	4670
Country local births	69%
Births at KEMH	800
Maternal transfers	300
Neonatal transfers	120
SCN admission rate	6.8%
Total MW FTE	260.5
MGP sites	9 (2 MW led)

- Out of home region births vary by region - 82% WB close to Perth **versus** 12% KB
- 98% women live within 4 hours of maternity site with LUSCS capacity



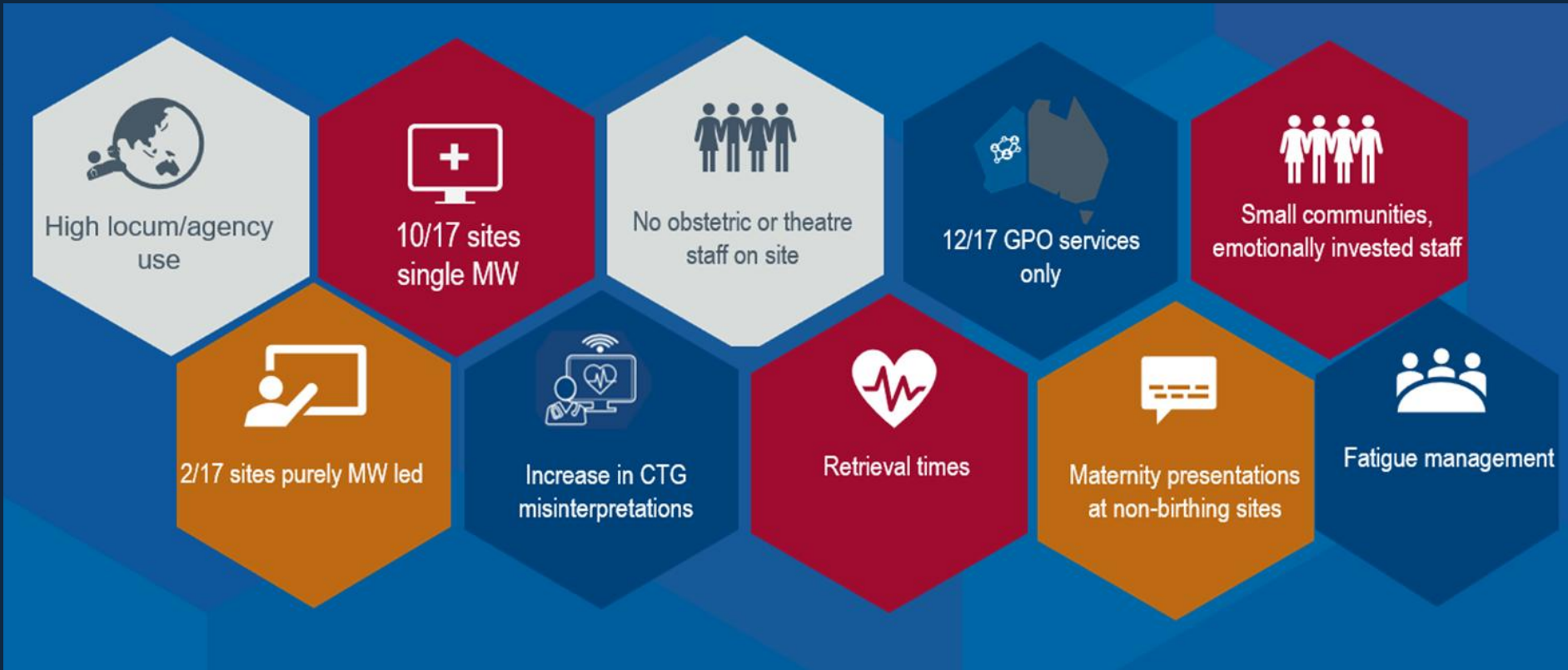


MOETS inception – 14 February 2022



17 maternity sites

- 5 CSF 4
- 8 CSF 3
- 5 CSF 2
- 10 MGPs
- 6 SCNs





MOETS inclusion criteria

- Pregnant women over 12 weeks gestation
- Post-partum women up to six weeks post birth
- Neonate up to 28 days age (corrected for gestational age for preterm)
- Open door policy



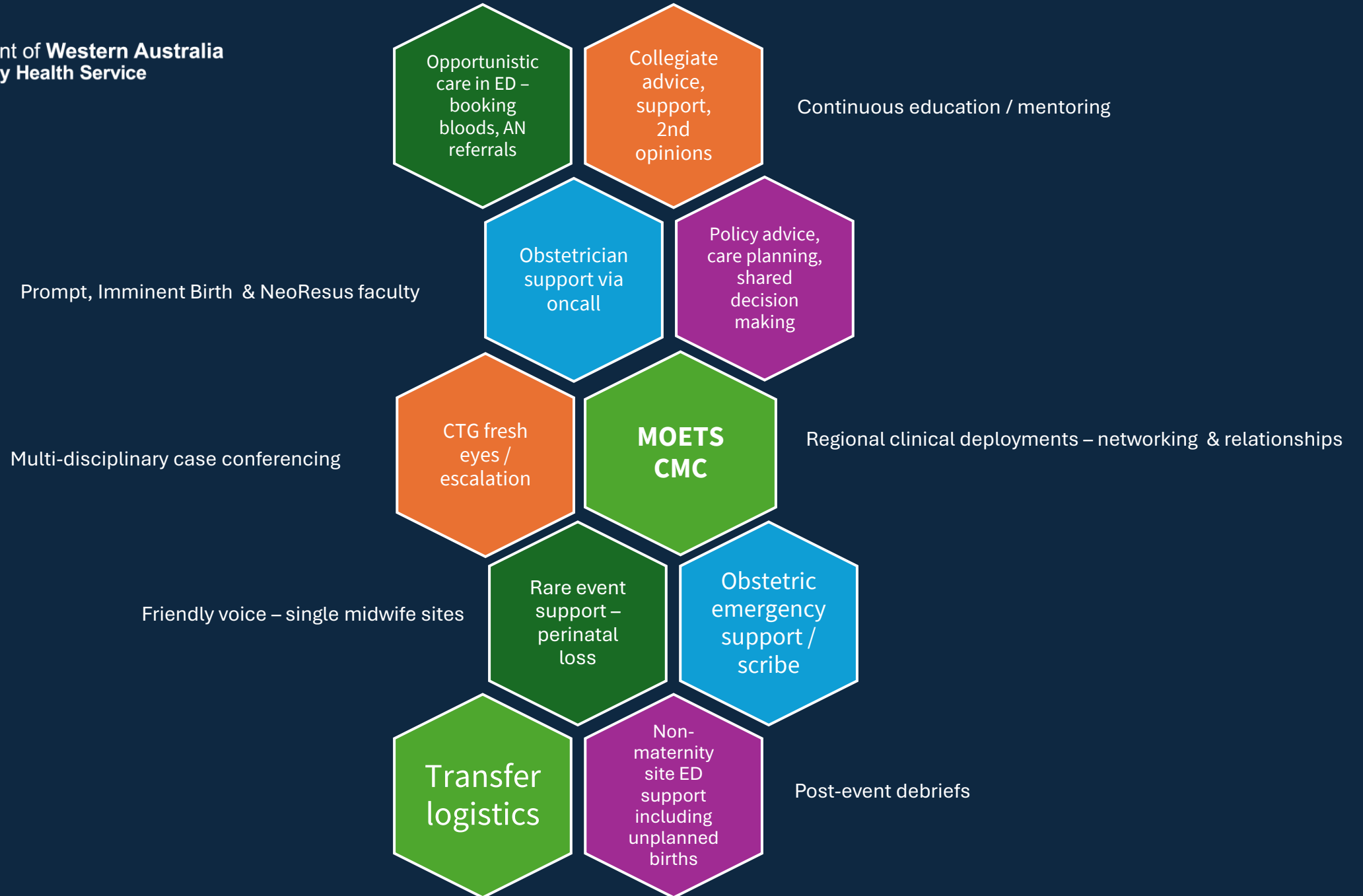
Maternity Sites



Non-birthing
Sites



In-reach





Government of Western Australia
WA Country Health Service

MOETS Activity

- ~ 10 000 referrals
- current activity ~ 300/month
- ~ 200 Cardiocograph reviews/ month
- Activity increase = 433%



Zana Mippy, dad & baby boy,
Meekathara Hospital
February, 2022

WA country birth numbers (2024-25)*

WACHS is the largest health service in Australia, with regions that vary in size, geography, population profiles socio-economic status and health outcomes. Additionally, pregnant women may need to travel to larger county or metropolitan locations to access the expertise and care they require.

KEY

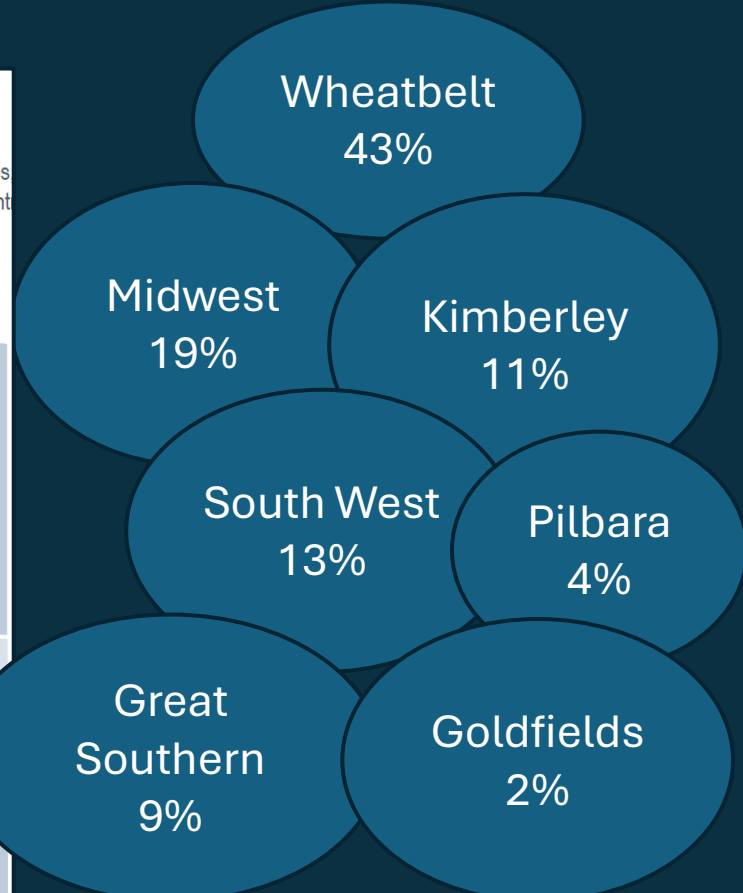
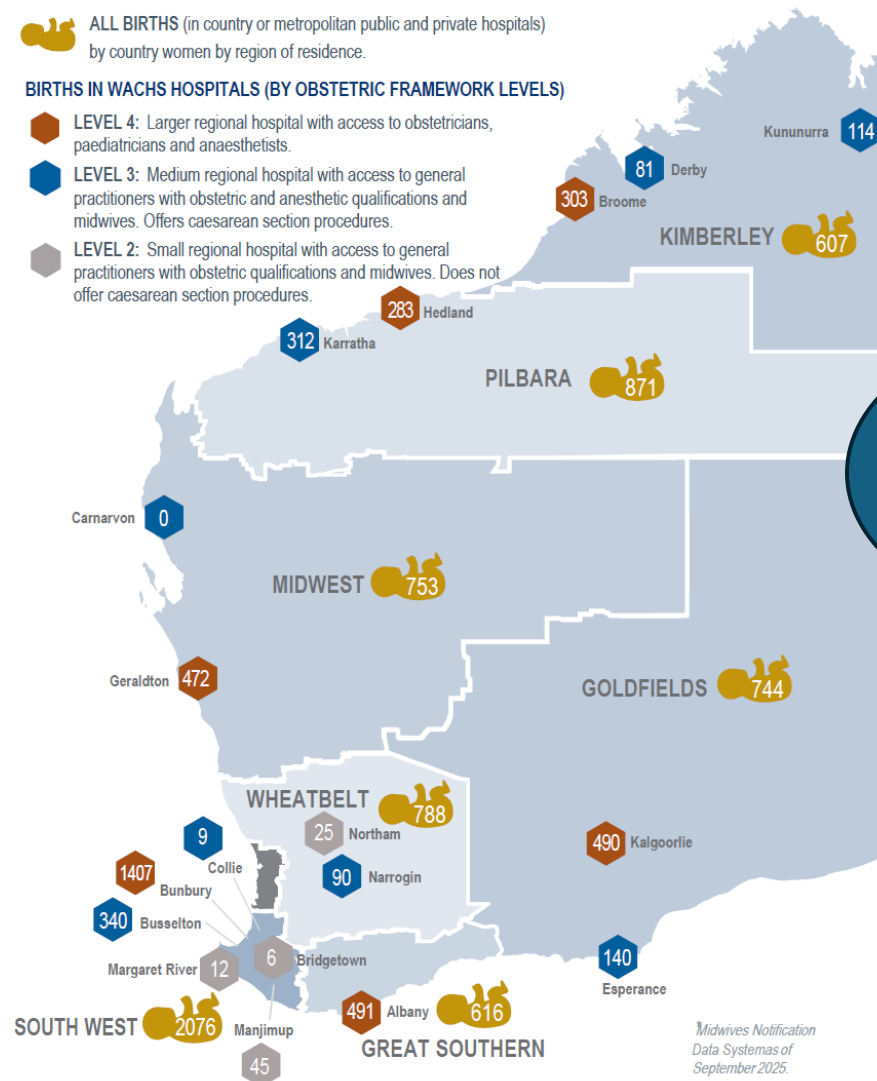
ALL BIRTHS (in country or metropolitan public and private hospitals) by country women by region of residence.

BIRTHS IN WACHS HOSPITALS (BY OBSTETRIC FRAMEWORK LEVELS)

LEVEL 4: Larger regional hospital with access to obstetricians, paediatricians and anaesthetists.

LEVEL 3: Medium regional hospital with access to general practitioners with obstetric and anesthetic qualifications and midwives. Offers caesarean section procedures.

LEVEL 2: Small regional hospital with access to general practitioners with obstetric qualifications and midwives. Does not offer caesarean section procedures.



Births at non maternity
WACHS sites

53

*Midwives Notification
Data System as of
September 2025.*



Endorsed Midwives in MOETS

CMCs enabled to practice to full extent of their specialised scope and expertise

Prompt initiation of pharmacological management during obstetric presentations

Practices in accordance with National Midwifery Guidelines for Consultation and Referral

Gold standard continuity of care by utilising diagnostic, interpretation and prescribing skills





The why





Government of Western Australia
WA Country Health Service



WACHSCCMOETSTEAMLEAD@health.wa.gov.au

639 Wellington St, Perth

State Health Operations Centre